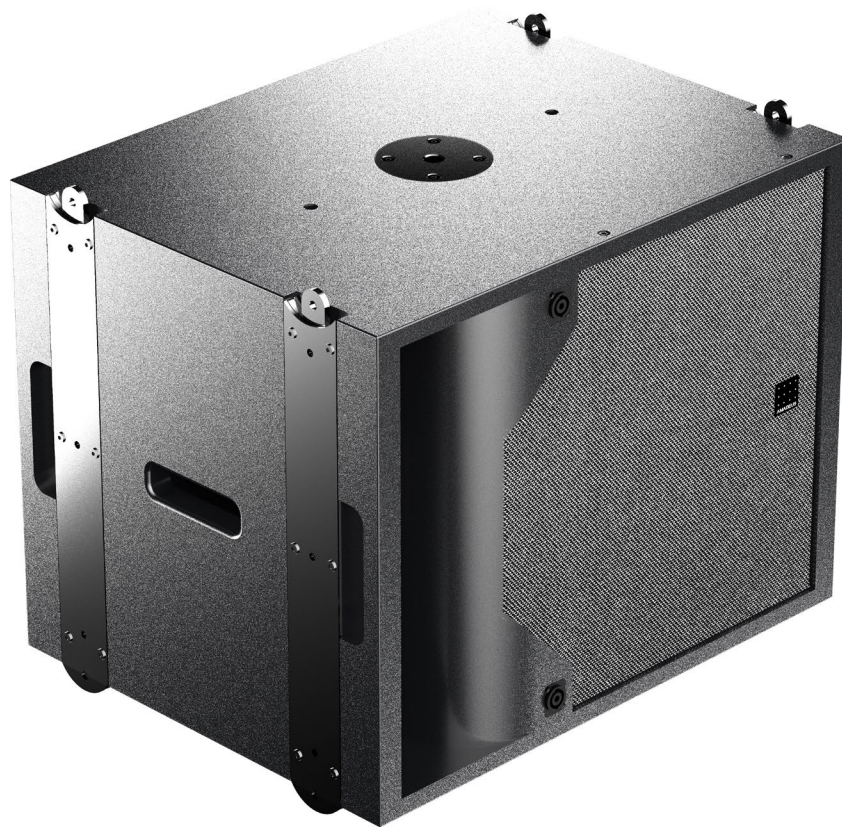


# DIVA M<sup>2</sup> SUB NEO

TECHNICAL SPECIFICATIONS





## ACOUSTICAL SPECIFICATIONS

---

Amplitude linearity ( $\pm$ 3dB)	45 - 350 Hz
Operating frequency range (- 6dB)	40 - 350 Hz
Cut off frequencies (- 10dB)	36 - 350 Hz
Number of ways	1
Sensitivity	96 dB
Maximum SPL (*)	139 dB (*) Peak level at 1-meter under free field conditions using 12 dB crest factor pink noise
Horizontal coverage	360°
Vertical coverage	360°

## TECHNICAL SPECIFICATIONS

---

Nominal impedance	8 $\Omega$
AES power handling	1600 W
Program power handling	3200 W
Peak power handling	4800 W
Transducers (LF)	1 x 15"
Enclosure type	Bass-Reflex

## PHYSICAL SPECIFICATIONS

---

Height	19.41 in (493 mm)
Width	23.19 in (589 mm)
Depth	18.07 in (459 mm)
Weight	88.2 lbs (40 kg)
Connectors	4 x speakON NL4MP
Handles	2
Rigging	Compatible with M <sup>2</sup> BUMP NEO

## REFERENCES

---

DIVA M <sup>2</sup> SUB NEO	High-efficiency LF extension loudspeaker for DIVA M <sup>2</sup> (1 x 15" LF) featuring optimised port and shallow depth
M <sup>2</sup> BUMP NEO	Bumper for DIVA M <sup>2</sup> and DIVA M <sup>2</sup> SUB NEO provided with two shackles
M <sup>2</sup> STACK	Ground-stacking accessory for M <sup>2</sup> BUMP NEO
M <sup>2</sup> STABILIZER	Ground-stacking accessory for DIVA M <sup>2</sup> SUB NEO and M <sup>2</sup> BUMP NEO
RACK M <sup>2</sup>	Rack for power amplifiers with compatible rigging system
TOOLCASE M <sup>2</sup>	System technician toolkit including display, inclinometer sensor and >5mw Class 3R 532nm laser units
FA1DIVAM <sup>2</sup> SUBNEO	Flight Case featuring casters with brakes for one Amadeus DIVA M <sup>2</sup> SUB NEO
9005	Jet Black finish for cabinet, based on RAL 9005 color
9010	Pure White finish for cabinet, based on RAL 9010 color
1013	Oyster White finish for cabinet, based on RAL 1013 color
7040	Window Grey finish for cabinet, based on RAL 7040 color
7030	Stone Grey finish for cabinet, based on RAL 7030 color
5011	Steel Blue finish for cabinet, based on RAL 5011 color
9005	Jet Black color for Airtex <sup>®</sup> acoustical fabric, based on RAL 9005 color
9006	White Aluminium color for Airtex <sup>®</sup> acoustical fabric, based on RAL 9006 color
9010	Pure White color for Airtex <sup>®</sup> acoustical fabric, based on RAL 9010 color
1035	Pearl Beige color for Airtex <sup>®</sup> acoustical fabric, based on RAL 1035 color
1036	Pearl Gold color for Airtex <sup>®</sup> acoustical fabric, based on RAL 1036 color



## STANDARD COLOR CODES

---

Amadeus systems offer a standard 'Jet Black' finish, based on RAL 9005 color. The following codes allow you to select separately the colors associated with the different external elements that Amadeus systems are composed of.

REFERENCE / \*\*\*\* 1 / \*\*\*\* 2

\*\*\*\* 1 RAL COLOR CODES FOR CABINETS AND MECHANICAL ELEMENTS

\*\*\*\* 2 RAL COLOR CODE FOR AIRTEX<sup>®</sup> ACOUSTICAL FABRIC

For example, a two-color PMX 5 MKII system with 'Jet Black' cabinet (RAL 9005) and 'White Aluminium' Airtex<sup>®</sup> fabric in front of the protection grid (RAL 9006) gets the code PMX5MKII/9005/9006. Another example, a single-color DIVA XS system, made with a 'Pure White' (RAL 9010) cabinet and mechanical elements and a 'Pure White' (RAL 9010) acoustical fabric Airtex<sup>®</sup> covering the protection grid gets the code DIVAXS/9010/9010.

Please contact us if you want to order any specific color.

## HIGHLY RESISTANT FINISH (HRF)

---

Amadeus recently invested in a new painting area featuring new painting machines able to produce a high-resistance resin-based finish, making the speakers highly resistant to scratches, shocks and water projections.

This new optional finish, increasing the systems' durability as well as the degree of protection provided by enclosures against intrusion, dust, accidental contact, and water up to IP55 (EN 60 529) is now available available on-demand.

Please contact us if you want to order any specific finish.

## ACCESSORIES TO MEET YOUR NEEDS

---

Accessories are often the forgotten detail. They are, however, a vital component in a complex speaker setup.

To compliment our core product offering, we also provide an extensive range of accessories.

The selection of accessories includes a huge number of mounting and connecting accessories, available to accommodate any configuration of installation.

The key to our success is to remain flexible. We have a unique manufacturing programme which allows us to efficiently produce anything from small batches to an automated production process for large scale manufacturing.

Please contact us if you want to order any specific accessory.

